

MINGDA MD-1000D



MAIN ADVANTAGES



300mm/s
High-speed



1000*1000*1000mm
Super Large Build Size



Dual Extruder



350degree High
Temperature Hot End



Camera & WIFI



Auto-leveling

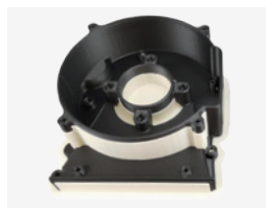
APPLICATIONS



Prototyping and design



Functional prototyping



Tools and fitting



Art and sculpture



Automotive



Jigs & Fixtures



Electrical and electronics (E&E) industry

TECHNICAL SPECIFICATIONS

Print Technology:	Fused Deposition Modeling(FDM)
Print Volume:	1000*1000*1000 mm
Machine Dimensions:	1680*1365*1665mm
Extruder Type:	Dual Extruders
Nozzle Diameter:	0.4mm (0.6, 0.8, 1.0 mm optional)
Extruder Temperature:	≤350°C
Platform Temperature:	≤110°C
Max Flow:	40mm ³ /s
Max Print Speed:	300mm/s
Support Software:	MingDa OrcaSlicer, Prusa Slicer, etc
Resume Printing Function:	Save data when power is off
Filament Detection:	Pause printing when filament run out
Firmware:	Klipper
Rated Power:	2700W
Filament Compatibility:	Common filament: PLA, TPU, PETG; Engineering filament: PA-CF/GF, PET-CF/GF, HtPA-CF/GF, PA-GF25/CF25; Support filament: S-Mulit, S-HtPA, PVA, etc